



# ANTY GNSS ANTI-JAMMER SYSTEM

Powerful Anti-Jamming for  
Civilian Applications

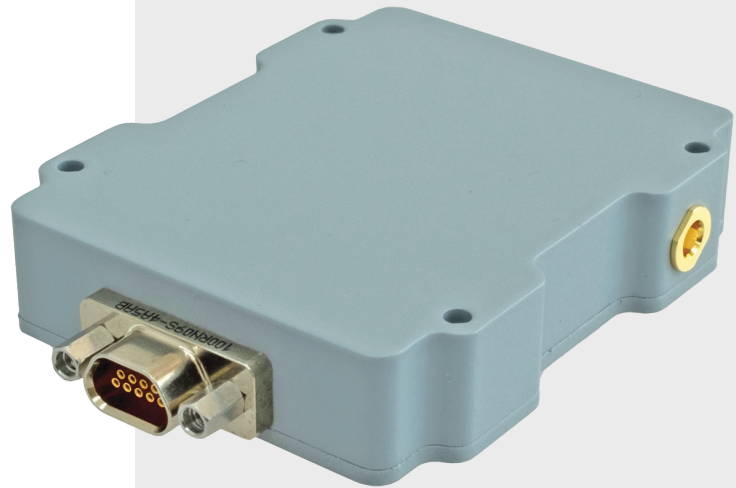
## GENERAL DESCRIPTION

ANTY GPS-GNSS Anti-Jammer is a small, lightweight, low power and affordable solution for robust GNSS operation under interference.

With in-house developed novel beamforming techniques and state-of-the-art CRPA technology, ANTY outperforms its competitors ensuring GNSS availability in the presence of jamming.

ANTY supports various messaging formats and integrates seamlessly with GNSS receivers deployed on land, sea, air platforms (including drones). ANTY also offers an embedded high performance GNSS receiver as an option and allows SBAS signals to be utilized for increased accuracy and reliability. In addition to CRPA, protection performance is further improved using adaptive notch filtering and pulse blanking.

Smaller than a matchbox car and weighing mere 80g, ANTY can be retrofitted to legacy systems with minimum effort elevating the availability performance to a new level. ANTY also provides a hassle-free integration opportunity for new resilient GNSS designs.



## BENEFITS

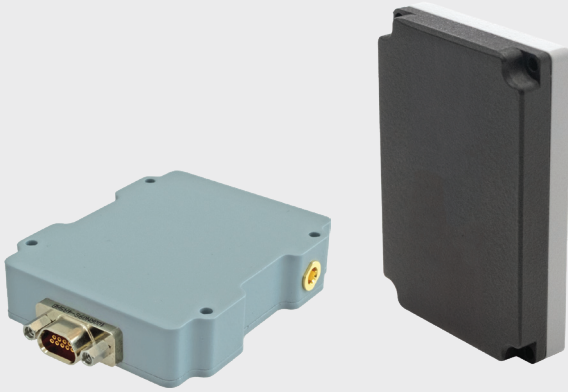
- Easy to install
- Plug and play integration into new or legacy platforms
- Immediate protection for urgent operational needs
- Compatible with all types of external GNSS receivers and vehicle navigation systems
- Light weight and ultra compact size
- Superior suppression performance
- Embedded GNSS receiver option
- Resilient PNT

## APPLICATION AREAS


- Dismounted Soldier
- Advance Transportation Systems
- Rotary Wing Drones
- Unmanned Autonomous Systems
- EW Protection for Communications and Timing
- Agricultural Applications
- Vehicle Tracking Systems
- Civil Drones

# ANTY GNSS ANTI-JAMMER SYSTEM


## Powerful Anti-Jamming for Civilian Applications




### Dimensions (cm)


 4.5 x 5.8 x 1.25 (DACU)  
4.3 x 6.2 x 1.2 (Antenna)

### Weight (g)


 80 (DACU)  
73 (Antenna)

### Power Consumption


 Maximum 3 W

 **Antenna Array**  
2 Array CRPA Antenna

 **Simultaneous Independent Nulling**  
1


 **Simultaneously Protected Active Bands**  
**Option 1**  
GPS L1  
GALILEO E1, BEIDOU B1  
SBAS

 **Nominal Wideband Suppression**  
>40 dB

 **Connectors**  
3x MCX Female,  
Micro-D 9-pin Socket

 **Operating Voltage**  
5-12 Vdc

 **Operating Temperature**  
-40 °C to +85 °C

 **Embedded GNSS Receiver**  
**(Optional)**  
GPS (L1), Galileo (E1), BeiDou (B1),  
SBAS, QZSS (L1), RTCM Support

 **Data Interfaces**  
Serial RS-485

© 2026 TUALCOM: The information contained herein is subject to change without notice. TUALCOM cannot be held responsible for this and no liability is accepted for any errors or omissions.



 [www.tualcom.com](http://www.tualcom.com)  
 [sales@tualcom.com](mailto:sales@tualcom.com)  
 +90 (312) 485 22 85



100022602