

TUALAJ 8200

CRPA GNSS Anti-Jam System

GENERAL DESCRIPTION

TUALCOM CRPA Anti-Jam GNSS Systems support critical missions by providing jam free GNSS signals and resilient PNT.

With its 8-element CRPA antenna, state-of-art digital controller and novel beamforming techniques TUALAJ 8200 eliminates interference to ensure uninterrupted operation of GNSS receivers in the presence of jamming sources from up to 7 different directions in 2 different frequency bands.

TUALAJ 8200 supports various messaging formats and integrates seamlessly with civil and military GNSS receivers deployed on land, sea, air manned/unmanned platforms and fixed installations. TUALAJ 8200 also offers embedded high performance GNSS receiver as an option and allows SBAS signals to be utilized for increased accuracy and reliability.

In addition to CRPA, protection performance is further improved using adaptive notch filtering and pulse blanking.

BENEFITS

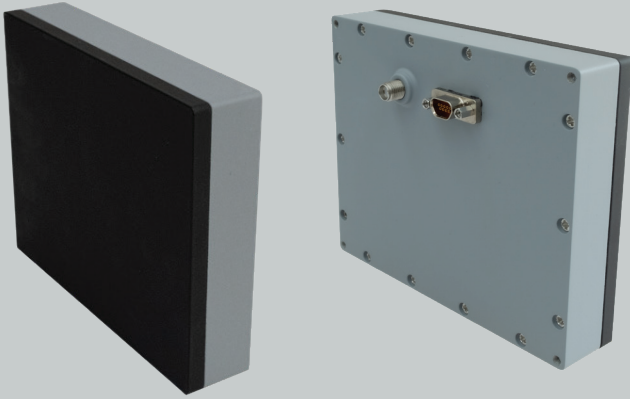
- Protection against jammers from 7 different directions
- Easy to install
- Plug and play integration into new or legacy platforms
- Immediate availability for urgent operational needs
- Compatible with all types of external GPS receivers and vehicle navigation systems, including M Code
- Antenna and controller integrated as a single unit
- Light weight and ultra compact size
- Superior suppression performance
- Embedded GNSS receiver option
- Compatibility with military standards
- Resilient PNT

APPLICATION AREAS

- Dismounted Soldier
- Fixed/Rotary Wing Aircraft
- GNSS Guided Munitions
- Unmanned Autonomous Systems
- Armored Land Vehicles
- Naval and Coast Guard Platforms
- Maritime EW Protection
- Critical Infrastructure EW Protection
- Advanced Transportation Systems
- Military Communications

TUALAJ 8200

CRPA GNSS Anti-Jam System




Dimensions (cm)


 9 x 11 x 2.3

Weight (g)


 380

Power Consumption


 Maximum 12 W

 **Antenna Array**
8 Array CRPA Antenna

 **Simultaneous Independent Nulling**
7


 **Simultaneously Protected Active Bands**
GPS L1, GALILEO E1
BEIDOU B1, SBAS

 **Nominal Wideband Suppression**
>50 dB

 **Connectors**
1x SMA Female, Micro-D 9-pin Socket


 **Operating Voltage**
12-28 Vdc

 **Operating Temperature**
-40 °C to +85 °C

 **Embedded GNSS Receiver (Optional)**
GPS (L1), Galileo (E1), BeiDou (B1I)
SBAS, QZSS (L1), RTCM Support

 **Environmental Tests**
MIL-STD-810G

 **EMI / EMC**
MIL-STD-461F


 **Data Interfaces**
Serial RS-485
Serial RS-232 (Optional)

© 2026 TUALCOM: The information contained herein is subject to change without notice. TUALCOM cannot be held responsible for this and no liability is accepted for any errors or omissions.



 www.tualcom.com

 sales@tualcom.com

 +90 (312) 485 22 85



100092602