



FLIGHT TERMINATION SYSTEM 20W/100W

GENERAL DESCRIPTION

Flight Termination System is a range safety and test system. Main function of the FTS is to send commands to the on-board Flight Termination Receivers when necessary. System is composed of a signal generator coupler for feedback loop and high power amplifier. Signal generator generates a tone modulated RF signal in response to commands from the control console. Generated signal is amplified with built-in RF HPA.

OPTIONAL

- Flight Termination System Control Panel with associated cabling for power and data
- Antenna

Flight Termination System can be controlled directly from PC through RS422 interface with FTS software. Software automatically connects to the selected serial port of PC.

Related Tone A, B, C, D, SAFE, ARM and TERMINATION commands can be sent and operating mode can easily be tracked from GUI running on PC. Optionally, control panel hardware with built-in buttons for

SAFE, ARM and TERMINATION commands can be used to control FTS. Along with control panel, optionally system can also be operated from PC through RS232 interface.



FLIGHT TERMINATION SYSTEM INCLUDES

- Signal Generator
- Coupler
- High Power Amplifier (HPA)
- Associated cabling for power
- Associated cabling for data

KEY SPECIFICATIONS

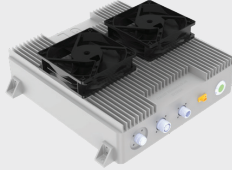
- Programmable RF center frequency
- Programmable tone frequencies
- 4 Tone Outputs
- Supports 20 IRIG tones
- Command tones and combinations are software programmable among 20 IRIG Tones
- MIL-STD-810G Compatible

FLIGHT TERMINATION SYSTEM 20W/100W

20W



100W



Control Panel



Antennas



Dimensions (cm)

20W: 20 x 26 x 10.4

100W: 30 x 28 x 10.9



Weight (g)

20W: 5300

100W: 7800



Power Consumption (W)

20W: <250 W

100W: <420 W



Max RF Output Power

20W: Max. 43 dBm (Adjustable)

100W: Max. 50 dBm (Adjustable)



Input Current

20W: 10 A @ 24 VDC

100W: 17.5 A @ 24 VDC



RF Connector

20W: SMA Female

100W: N-TYPE Female



Power Connector

20W: Circular 2-pin Female

100W: Circular 3-pin Female



Operating Temperature (°C)

20W: -30 °C to +60 °C

100W: -30 °C to +60 °C



Frequency Range

390 - 450 MHz



Modulation

FM (up to 4 Tones)



Input Voltage

18-36 VDC



Tone Frequencies

20 IRIG Tones



Data Connector

Circular 13-pin Female



VSWR

Less than 2:1



Programming Interface

RS422 or RS232 via Control Panel



Environmental Condition

MIL-STD-810G

© 2026 TUALCOM: The information contained herein is subject to change without notice. TUALCOM cannot be held responsible for this and no liability is accepted for any errors or omissions.

TUALCOM

www.tualcom.com

sales@tualcom.com

+90 (312) 485 22 85



150052601