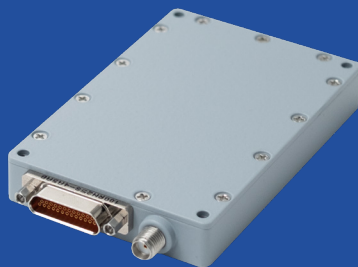


# FLIGHT TERMINATION RECEIVER



## GENERAL DESCRIPTION

Programmable Flight Termination Receiver is a compact airborne flight termination receiver and tone decoder for flight termination system applications that utilized tone based command messaging. FTR provides highly sensitive superheterodyne RF receiver whose center frequency is programmable.

The versatile tone decoder can be programmed to decode 3 or 4 tone sequences / frequencies among 20 IRIG tones and provides command outputs for flight termination devices.

FTR can be enabled for full fail-safe operation, including programmable loss of tone duration. FTR is designed using latest technology and modern production processes to provide a reliable and rugged product.

## KEY SPECIFICATIONS

- High sensitivity receiver
- Wide range programmable RF center frequency
- Programmable decoder tone frequencies
- Full failsafe operation (Cross-strapping available)
- Reverse polarity power protection
- Light weight
- Compact size
- IRIG Compatible
- MIL-STD-810G Compatible
- Receiver signal strength telemetry output (SSTO)
- RS422 Communication
- RCC 319-14 Compliant
- RCC 313-01 Compliant

# FLIGHT TERMINATION RECEIVER



## Weight (g)

97

## Dimensions (cm)

Single: 8.4 x 5.6 x 1.3

## Frequency Range

390-450 MHz

## Input Voltage

18 - 36 Vdc

## Command Outputs

4 Solid-State Output

## Input / Output Impedance

50 Ohm

## RF Connector

SMA

## Power & I/O Connector

25-pin Micro-D Socket

## Input Current

150 mA max @ 28 Vdc

## Power Consumption

5 W Max.

## VSWR

Less than 2:1

## Operating Temperature

-40 °C To +85 °C

## Programming Interface

RS422

## RF RECEIVER CHARACTERISTICS

### Dynamic Range

-107 dBm to +13 dBm

### RF Sensitivity Range

Between -107 dBm to -116 dBm

### Demodulation

FM up to 4 tones

## SIGNAL STRENGTH TELEMETRY OUTPUT

### Quiescent (No RF) Input

0.5 +/- 0.25VDC

### Between -50 dBm to -60 dBm RF Input

min 4.5 +/- 0.25VDC

### Max. SSTO Voltage

5 +/- 0.25VDC

## TONE DECODER

### Tone Monitor Outputs (Active)

4.5 VDC +/- 0.5VDC

### Tone Monitor Outputs (Non-active)

0 VDC +/- 0.5VDC

### Response Time

4 msec to 25 msec

## FAILSAFE OPTIONS

### Loss of Tone (Programmable from 5 to 99 sec)

### Low Voltage (Programmable from 12V to 36V)

### Cross-strapping Option

